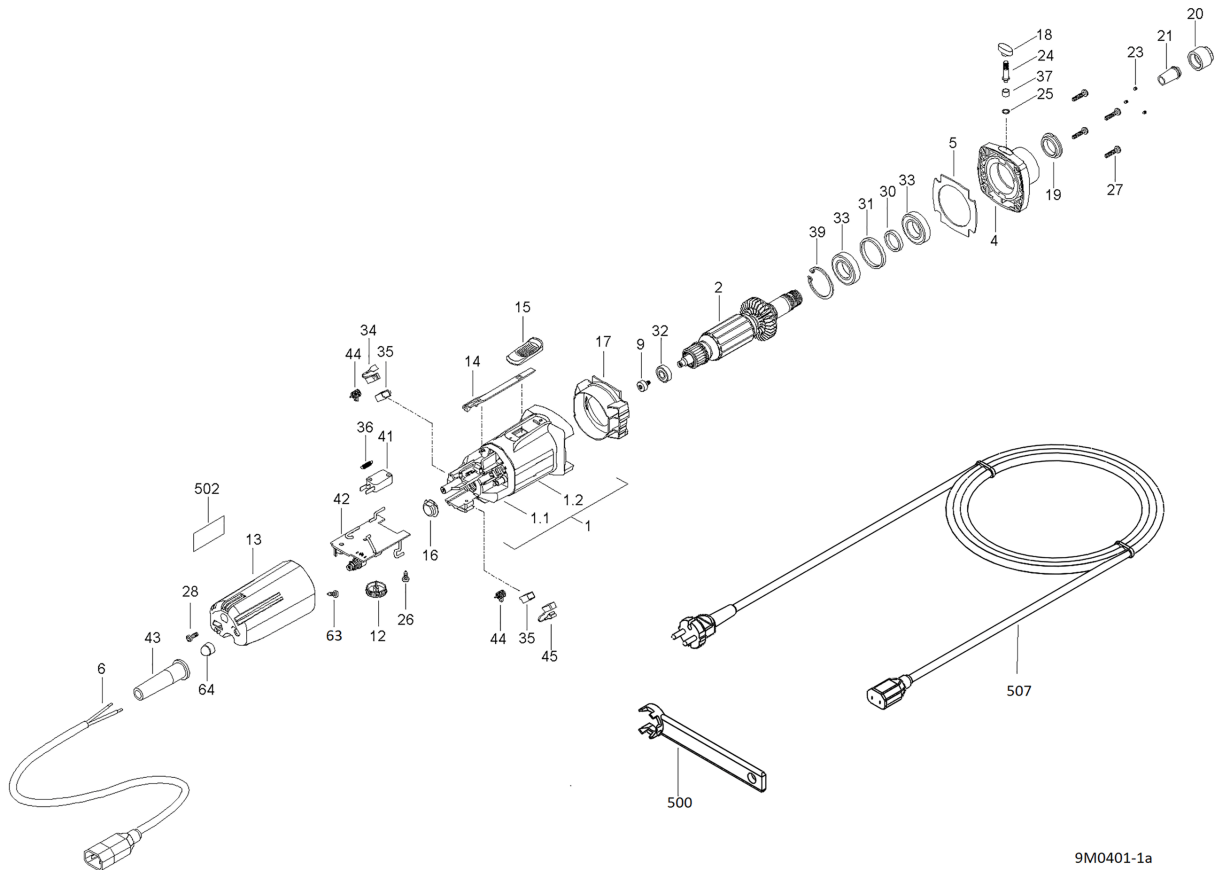


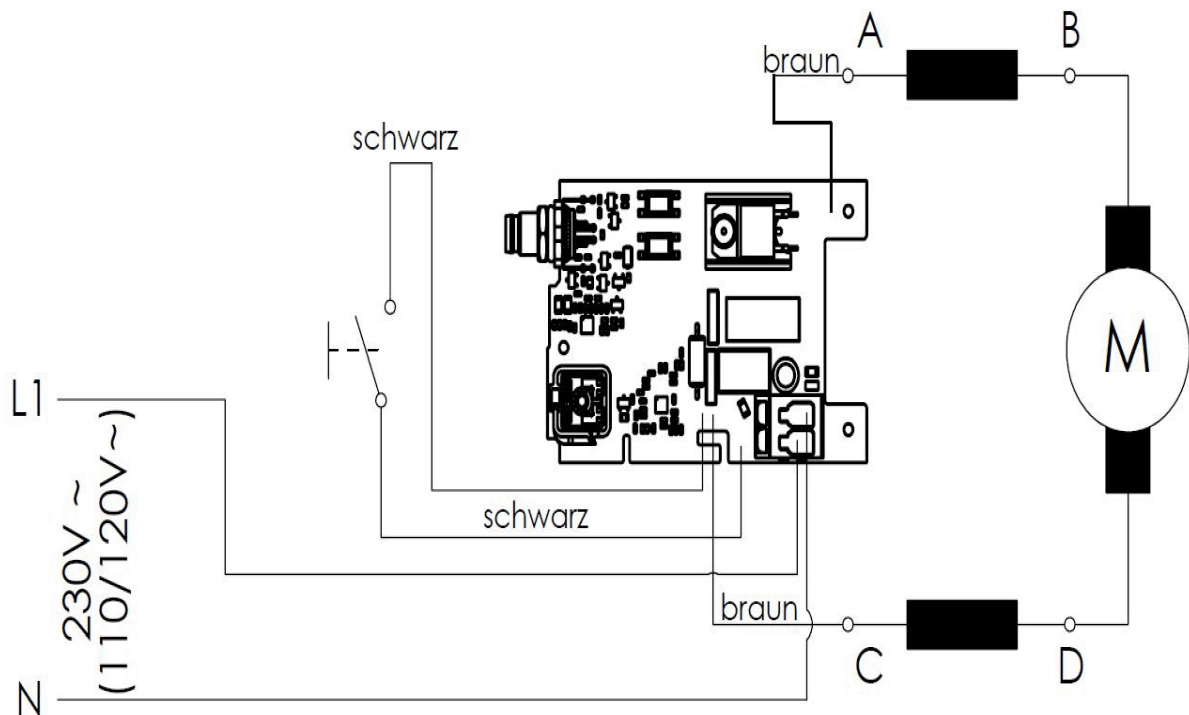
Ref. No. 9M0401

Milling motor FM 1000 PV-ER



9M0401-1a

Anschlußschema 110-120V / 230V



pos. no.	spare part number	GTIN	name of spare part	count	price key
1	084674	4032689203942	Motor casing with inductor	1	31
1.1	084673	4032689203713	Inductor	1	26
1.2	203454	4032689145365	Motor casing	1	20
2	209020	4032689229553	Armature cpl. 230 V	1	36
4	207476	4032689203515	Bearing cover	1	20
5	207757	4032689210650	sealing disc	1	7
6	087940	4032689214436	Mains cable with cold appliance plug C18, 930mm	1	13
9	205518	4032689174686	Tachometer carrier	1	12
12	208411	4032689218939	Setting wheel	1	6
13	207760	4032689214269	Motor cover with opening	1	13
14	203456	4032689143545	Sliding cover	1	6
15	203045	4032689129723	Switch button	1	6
16	207482	4032689203201	Tachometer cover	1	6
17	207758	4032689210667	Air conducting ring	1	9
18	204761	4032689163215	Push-button	1	4

pos. no.	spare part number	GTIN	name of spare part	count	price key
19	207474	4032689203164	Nut	1	9
20	093758	4032689229683	Union nut ER 16M balanced	1	99
21	093756	4032689229669	Collet chuck ER 16 8 mm	1	99
23	005292	4032689039824	Threaded pin M 3 x 4 - 45 H	3	1
24	207479	4032689203195	Locking bolt	1	6
25	065042	4032689066653	Sealing ring	1	1
26	055276	4032689206660	Cylindrical oval-head screw	1	1
27	055061	4032689058313	Cylindrical oval-head screw K40x18 Kombi-TORX	4	1
28	055233	4032689058320	Cylindrical oval-head screw K40x12 KT 20	1	1
30	207484	4032689203218	Spacer disk 20 x 25 x 4	1	6
31	207478	4032689203188	Spacer disk 37 x 32 x 4	1	7
32	062010	4032689053608	Grooved ball bearing 7/19 x 6 DIN625	1	16
33	062122	4032689203126	Grooved ball bearing 20 x 37 x 9	2	15
34	063201	4032689206677	Carbon brush with automatic cut-off 230 V	1	11
35	063128	4032689016948	Brush holder	2	2
36	006634	4032689129815	Retracting spring	1	2
37	066043	4032689021393	Pressure spring	1	2
39	071016	4032689203393	Retaining ring 37 x 1,5	1	2
41	087910	4032689183442	Snap-action switch	1	9
42	077710	4032689214313	Control module 230 V with external speed setting	1	28
43	086064	4032689048185	Cable protecting sleeve	1	2
44	076211	4032689020730	Torsion spring	2	1
45	063201	4032689206677	Carbon brush with automatic cut-off 230 V	1	11
63	055264	4032689176796	Oval-head screw	1	1
64	077009	4032689127552	Hexagonal protective cap	1	1
500	209007	4032689229522	Clamping key ER 16 M	1	17
502	077708	4032689210780	sticker revolution speed	1	3
507	087941	4032689214443	Mains cable with cold appliance plug C17, 4 m, H05RN-F2x1 ²	1	17